



**A Short History of the Burdett Library ()**



**Recollections of a Native-Born Glencarlynite ()**



**Clarendon Bookmark ( 29-01-03-03-0013)**



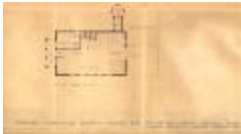
**Old Location of Columbia Pike Branch Library ( 29-01-03-17-0329)**



**Glencarlyn Library Exterior ( 29-01-13-19-0340)**



**Cherrydale Library Front Porch (230-0559)**



**Proposed Plans for Glencarlyn Library (29-01-05-0003)**



"Here is Your Library Flyer!" (29-01-12-05-0012)



Columbia Pike Architectural Drawing Potential Plans (29-01-12-05-0013)



Columbia Pike Library Floor Plans (29-01-12-05-0020\_02)



Arlington Central Library Construction (29-01-13-01-0058)



Library Bond Signage (29-01-13-01-0059)



Future site of the Arlington County Central Library (29-01-13-01-0060)



**Central Library Construction Site (29-01-13-01-0062)**



**Administrative Offices of Central Library Prior to 1960 (29-01-13-01-0063)**



**Interior View of Central Library (29-01-13-01-0064)**



**Central Library Opening Ceremony (29-01-13-01-0065)**



**Central Library Opening Ceremony (29-01-13-01-0066)**



**Central Library Opening Ceremony (29-01-13-01-0067)**



**Central Library Opening Ceremony (29-01-13-01-0068)**



**Central Library Opening Ceremony (29-01-13-01-0069)**



**Central Library Opening Ceremony (29-01-13-01-0070)**



**Proposed Site for Central Library Branch Location (29-01-13-01-0268)**



**Cherrydale Library (29-01-13-06-0021p)**



**Cherrydale Opening Celebration (29-01-13-06-0025)**



**Cherrydale Library Information Desk (29-01-13-06-0026)**



**Cherrydale Opening Celebration (29-01-13-06-0027)**



**Librarians of Cherrydale Library (29-01-13-06-0048p)**



**Cherrydale Library Exterior (29-01-13-08-0196)**

---



**Aurora Hills Branch, 1969 (29-01-13-16-0007)**

---



**Arlington County Library Branch (29-01-13-18-0322)**

---



**Arlington County Library Branch (29-01-13-18-0332)**

---



**Arlington Community Public Library Club Meeting Notes (29-02-16-01-02-0002)**

---



**Clarendon Library Branch (29-0266)**

---



**Clarendon Library Branch Sign (29-0267)**

---



**Aurora Hills Branch (29-0302)**

---



**Glencarlyn Library Exterior (29-0335)**

---



**Arlington County, Virginia Department of Libraries "Sites for Libraries, Central and Branch Units" (29-1-1-11-13\_01-05)**

---



**Letter from Library Committee to Jefferson District Fire Department Supervisor, 1930 (29-1-1-11-1\_01-02)**

---



**First Meeting Minutes of the Cherrydale Library Association (29-1-17-10\_01-04)**

---



**Cherrydale Library Association Constitution and Bylaws (29-1-2-17-2\_01-03)**

---



**Cherrydale Meeting Minutes; n.d. (29-1-2-17-9\_01-02)**



**American Library Association Letter: How To Start A Library (29-1-3-4-10)**



**1935-1936 Librarian's Annual Report (29-1-3-6-37\_01-06)**



**Burdette Library/Glenacrlyn Library, 1958-1959 referring (29-1-5-5)**



**Naming of the New Glencarlyn Library Building (29-1-5-7)**



**Charter Members of the Arlington Community Public Library Club, 1929 (29-2-16-1-1-3 )**



**Annual Report of the Education Committee, 1924-1925 (29-2-16-2-2-1\_117-124)**

---



**Book Loan List, Clarendon Branch Library, 1926 (29-2-16-2-2-1\_95-96)**

---



**Fall 1925 Clarendon Library Report (29-2-16-2-2-1\_99-102)**

---



**Buckingham Association "Get to Know Your Local Library" (29-2-16-3-5-3)**

---



**Alrington County Library Association County Appropriations sheet (29-2-16-3-6-3)**

---



**Cherrydale Library House, Pre-1961 ([dnp - dupe] 29-01-13-07-0039p)**

---